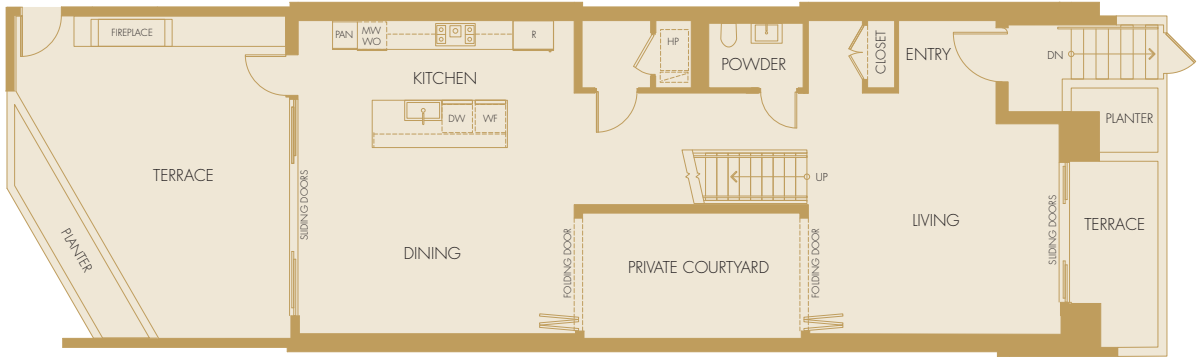


3,329 TO 3,501 SQ FT
INDOOR + OUTDOOR

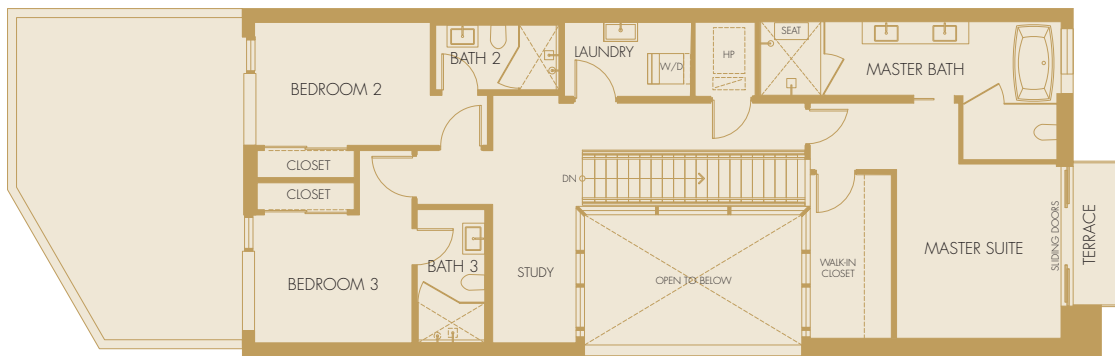
TOWNHOMES **3-6**

INDOOR 2,605 - 2,765 SQ FT
OUTDOOR 724 - 736 SQ FT

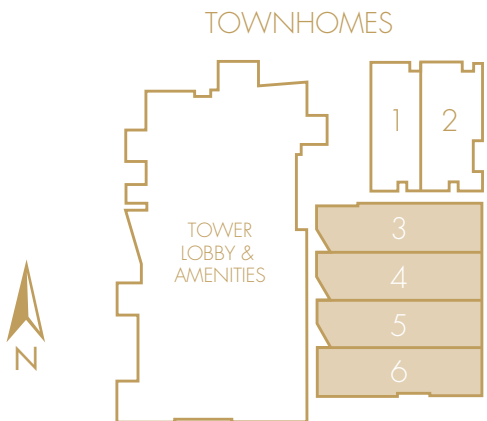
3 BED + 3.5 BATH + STUDY
EAST VIEW



LEVEL 1



LEVEL 2



This is not an offer to sell, but it is intended for information only. The developer reserves the right to make modifications in materials, pricing, specifications, plans, designs, scheduling and delivery of the homes without prior notice. All square footage is an estimate only and subject to change at any time. 9/15/16



THE PARK

BANKERS HILL